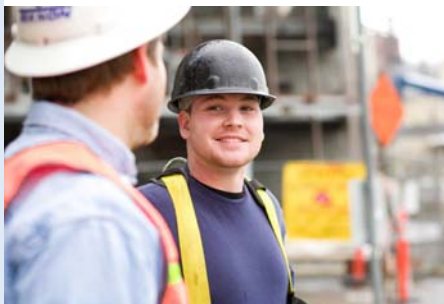


Plant Hire

Additional Modules for UK Construction Industry

- Application Certificate Billing
- Construction Industry Scheme
- Operative Time Entry
- PFM - Project Control & Reporting
- Plant Hire
- Salary Allocation
- Subcontract Payment Control

Whitehouse is a specialist in the construction industry and developed these modules to meet best practice. All are accredited by Oracle.



The Plant Hire module was designed as a single solution suite for the control of Plant within the Construction Sector. The new module enables the hire plant items to be managed through a number of steps:-

- Requisition the plant based upon project needs with required on and off hire dates.
- Determine whether to source from owned plant (internal hire) or third party hire (external hire). This step requires a view of what owned resources are available (a plant inventory with plant scheduling). In most cases where owned plant is available this will be used rather than third party plant.
- Order the plant if third party. This requires plant to be ordered not just on a quantity basis, but also on a date/time on and off basis.
- Allocate owned plant. This requires advanced allocation for visibility of future demands: also the allocation where necessary of consumable items e.g. fuel, welding rods.
- Despatch from depot where owned plant, with necessary despatch documentation.
- Receive plant on site. The ability to record the details of what plant items have been received on site and when.
- Charge for usage over time to the construction project.
- Off hire both owned and third party plant. This incorporates the full collection cycle from requesting an off hire of the plant through to recording the physical plant off hire.
- Invoice match for third party plant. This utilises the plant register showing what was on hire against what has been charged for by the supplier over time.

Within a plant environment the plant can have different characteristics. The following are the broad characteristics:-

- Unique Plant. This is plant that is hired on an individual basis, for example a compressor. This requires a unique plant reference for allocation and usage tracking. The organisation may have many such compressors, and will require overall visibility of compressors.
- Non-unique. An example would be scaffolding where it is impossible to monitor an individual piece of scaffolding. The requirement to view a cumulative hire position by supplier and include owned scaffold items on any project is required. Over time the amount of scaffolding varies on a project and the charge for use must reflect the changing daily situation.
- Consumable Items. These are items which are physically consumed during the hire period, and will not be returned. An example being fuel for compressors. This also allows for sale or return items.
- One off charges, e.g. delivery charges to site.

Additional functionality planned for a Phase Two development includes:

- Client Billing where the plant is hired out to third parties.
- Operated Plant. The ability to record use of driver operated plant via a time sheet mechanism.
- Plant Exchange. Where a piece of plant is replaced with an alternate plant item.
- Plant Kits. The ability to create a number of items under a pseudo reference, and hire as a single item.

ORACLE CERTIFIED ADVANTAGE PARTNER

JD EDWARDS WORLD

ORACLE CERTIFIED ADVANTAGE PARTNER

JD EDWARDS ENTERPRISEONE

WHITEHOUSE
Consultants

To learn more about the ways in which Whitehouse Consultants can help you, please visit our web site.

www.whitehouse-consult.co.uk