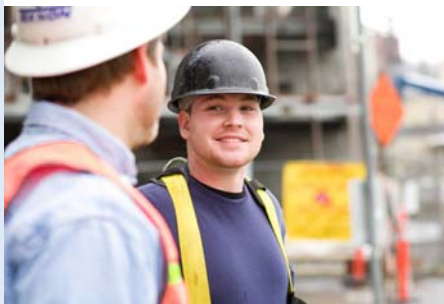


Additional Modules for UK Construction Industry

- Application Certificate Billing
- Construction Industry Scheme
- Operative Time Entry
- PFM - Project Control & Reporting
- Plant Hire
- Salary Allocation
- Subcontract Payment Control

Whitehouse is a specialist in the construction industry and developed these modules to meet best practice. All are accredited by Oracle.



Salary Allocations

This is a new module written for the EnterpriseOne product suite. The module is designed to allow the allocation of payroll costs for those employees paid on a salaried basis to activities they have worked on. This can be on an actuals gross cost basis for monthly salaried employees, or based on standard cost rate bands for weekly salaried employees.

Some of the more detailed functionality provided by the system:-

- **Import Employee Changes from Payroll System**
Import new employee details and changes to existing employee details from 3rd party payroll system. Add additional required data for Salary Allocations and update Employee information.
- **Maintain Banded Costs for Weekly Timesheeting Employees**
Maintain hourly rates by job category for hourly paid employees.
- **Generate Weekly Timesheets**
Generate weekly default timesheets.
- **Import Actual Costs and Generate Monthly Timesheets**
Import actual payroll costs from 3rd party payroll system. Generate monthly timesheets.
- **Weekly Timesheet Completion**
Employees complete weekly timesheets. (Optional specification of minimum hours) and submit for approval.
- **Monthly Timesheet Completion**
Employees complete monthly timesheets (based upon percentages of time) and submit for approval.
- **Timesheet Approvals**
Approval according to approval route specified at employee level (up to 2 approval stages.)
- **Weekly Timesheet Journals**
Generate Timesheet General Ledger journals based upon hours booked and employee standard hourly rate. Additionally generate up to 3 'burden' transactions for each timesheet line.
- **Monthly Timesheet Journals**
Generate Timesheet General Ledger journals based upon actual monthly payroll cost and % of time booked. Additionally generate up to 3 'burden' transactions for each timesheet line.

ORACLE CERTIFIED ADVANTAGE
PARTNER

JD EDWARDS WORLD

ORACLE CERTIFIED ADVANTAGE
PARTNER

JD EDWARDS ENTERPRISEONE

WHITEHOUSE
Consultants

To learn more about the ways in which Whitehouse
Consultants can help you, please visit our web site.

www.whitehouse-consult.co.uk